



WEST CREEK HOMES



*Rendering is an artists illustration only, actual home changes slightly

ROCKPORT

29 Legacy Reach Cres.

2144 SQ.FT

Features:

- o Enhanced Specification
- o Full Hardie Board siding
- o Railing (no stub walls)
- o Electric Fireplace
- o Tech Center
- o Oversized walk in pantry
- o Walk-in closets in all upper floor bedrooms

Upgrades

- o Side entrance, Plumbing rough in for future secondary suite included
- o 9ft basement foundation walls



3 Bedroom



2.5 Bath

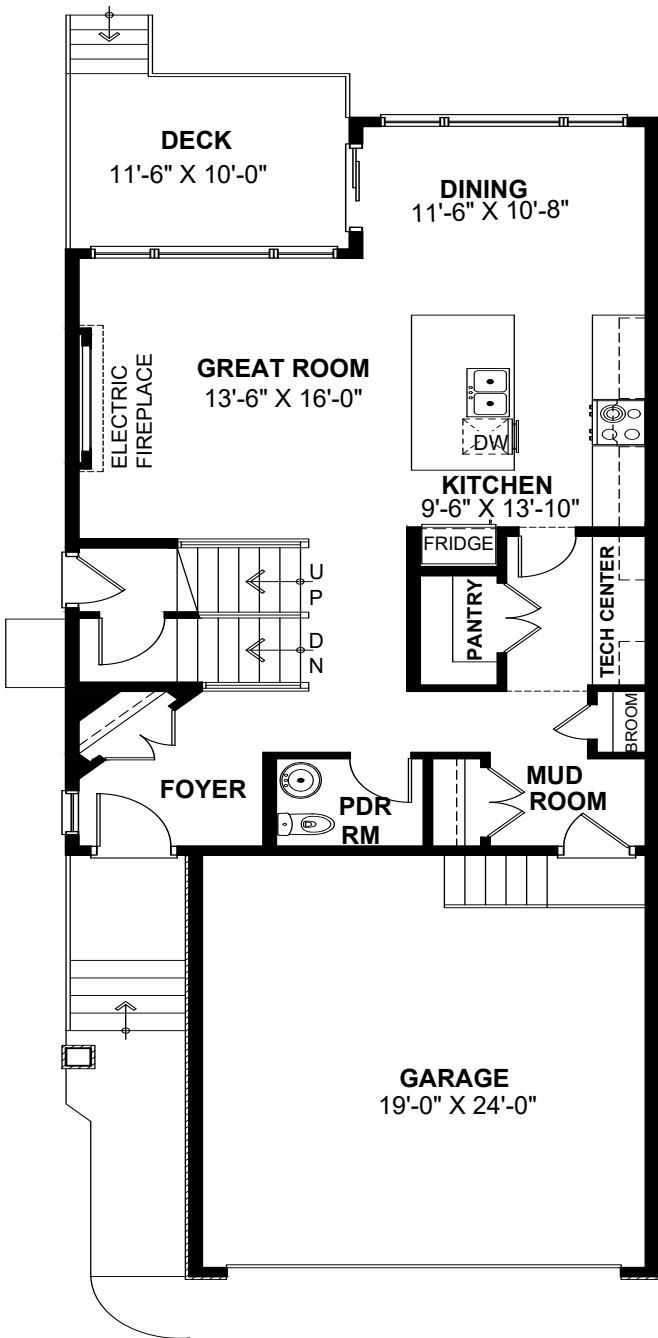
Clarity and Quality all the way home.



WESTCREEK HOMES

Contact Us | legacy@westcreekhomes.ca | westcreekhomes.ca

MAIN FLOOR 922 SQ.FT



UPPER FLOOR 1222 SQ.FT

