

CASCADE

3 - 198 WOLF HOLLOW RD

1341 sq.ft



*Rendering is an illustration only. The actual home will slightly differ.

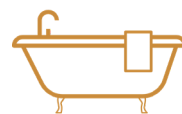


WESTCREEK
HOMES

Contact Us
wolfwillow@westcreekhomes.ca
587.452.8496
westcreekhomes.ca



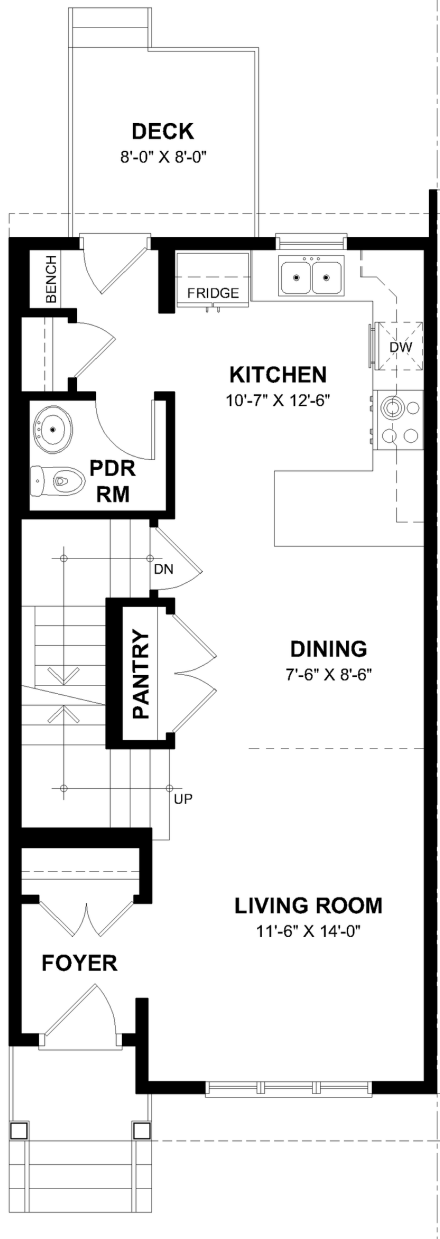
3 Bedroom



2.5 Baths

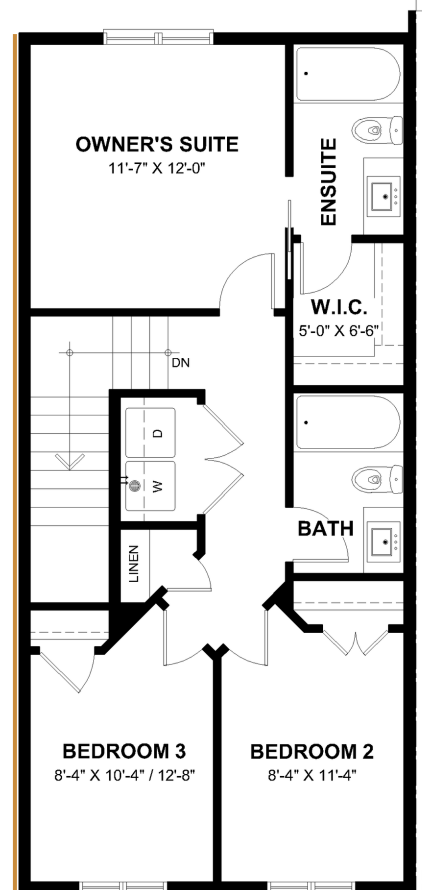
Main Level

768 sq.ft



Upper Level

948 sq.ft



*Gold line indicates shared wall

Features:

- Double detached garage
- Rear deck
- Large pantry
- Open concept
- Owner's suite with walk-in closet

CASCADE
Keep up to date with us on



WestCreek Homes building in:

