

# BIRMINGHAM

8 WOLF HOLLOW RD

1864 sq.ft



\*Rendering is an illustration only. The actual home will slightly differ.

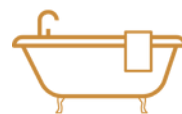


WESTCREEK  
HOMES

Contact Us  
[wolfwillow@westcreekhomes.ca](mailto:wolfwillow@westcreekhomes.ca)  
403.452.8496  
[westcreekhomes.ca](http://westcreekhomes.ca)



4 Bedroom



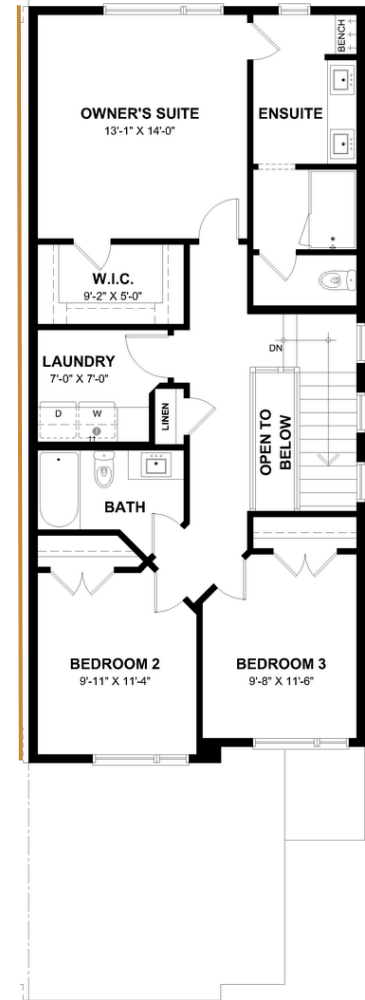
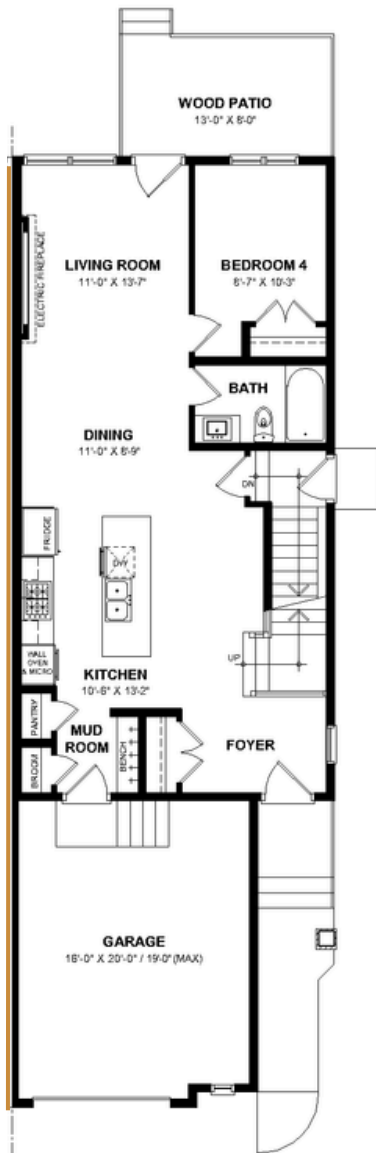
3 Baths

# Main Level

882 sq.ft

# Upper Level

982sq.ft



\*Gold line indicates shared wall

## Features:

- Single garage with extra storage
- Chef's Kitchen
- Mud room with deacons bench
- Main floor bedroom and full bath
- Main floor side entrance
- Main floor fireplace
- Upper floor laundry room
- Stairwell open to below

# BIRMINGHAM

Keep up to date with us on



WestCreek Homes building in: