

BIRMINGHAM

52 WOLF HOLLOW RD

1864 sq.ft



*Rendering is an illustration only. The actual home will slightly differ.

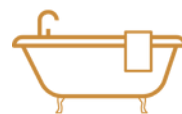


WESTCREEK
HOMES

Contact Us
wolfwillow@westcreekhomes.ca
403.452.8496
westcreekhomes.ca



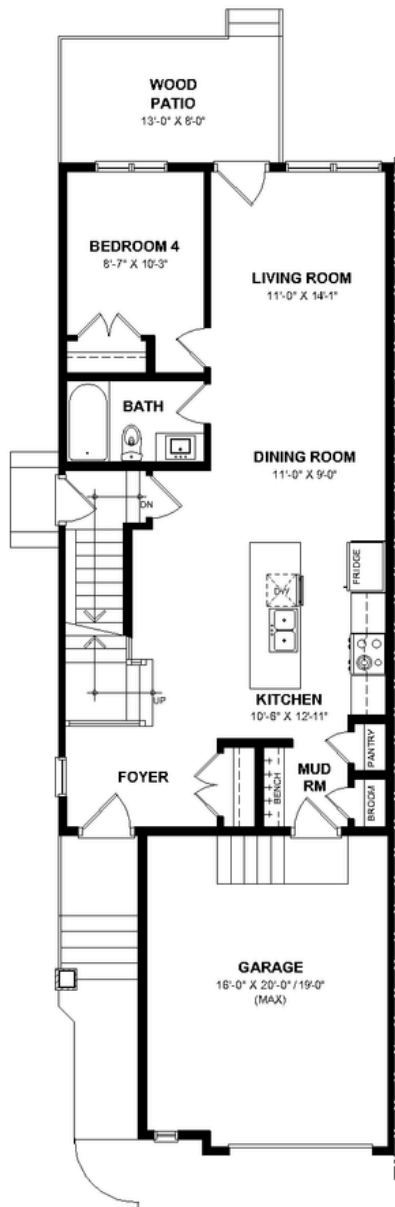
4 Bedroom



3 Baths

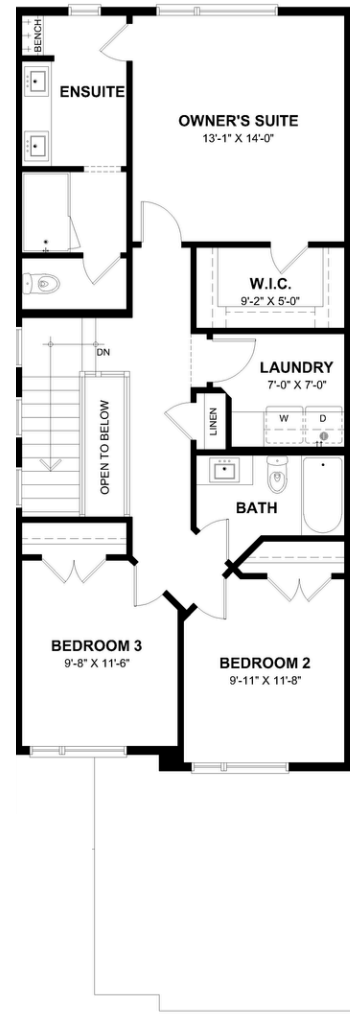
Main Level

882 sq.ft



Upper Level

982sq.ft



*Gold line indicates shared wall

Features:

- Single garage with extra storage
- Mud room with deacons bench
- Main floor bedroom and full bath
- Upper floor laundry room
- Stairwell open to below
- Main floor side entrance

BIRMINGHAM

Keep up to date with us on



WestCreek Homes building in: