

BIRMINGHAM

52 WOLF HOLLOW RD

1864 sq.ft



*Rendering is an illustration only. The actual home will slightly differ.

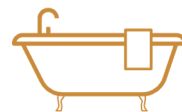


WESTCREEK
HOMES

Contact Us
wolfwillow@westcreekhomes.ca
587.452.8496
westcreekhomes.ca



3 Bedroom



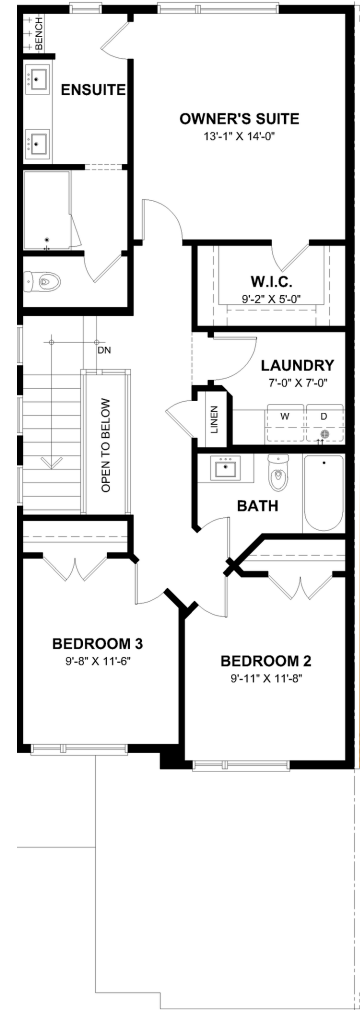
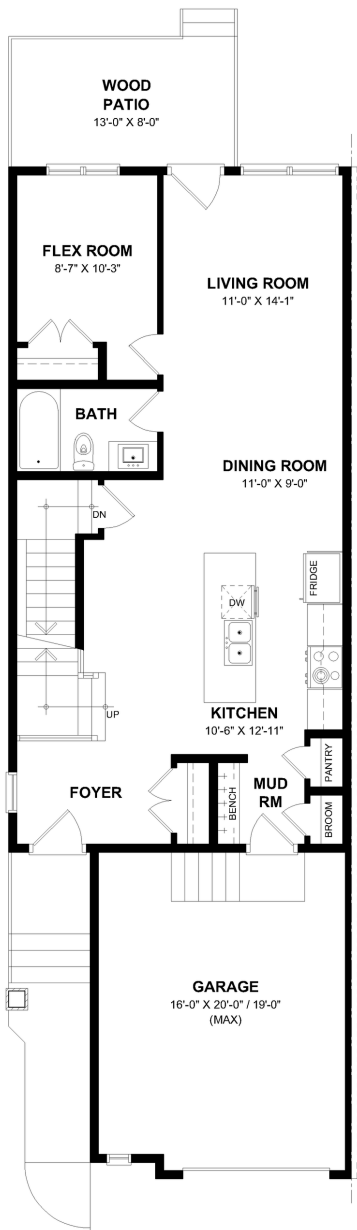
3 Baths

Main Level

882 sq.ft

Upper Level

982sq.ft



*Gold line indicates shared wall

Features:

- Single garage with extra storage
- Mud room with deacons bench
- Main floor full bath
- Main floor flex room
- Upper floor laundry room
- Stairwell open to below

BIRMINGHAM

Keep up to date with us on



WestCreek Homes building in:

