

NEWCASTLE

4 WOLF HOLLOW RD

SHOWHOME

1716 sq.ft

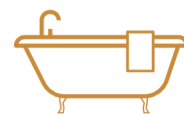


WESTCREEK
HOMES

Contact Us
wolfwillow@westcreekhomes.ca
587.452.8496
westcreekhomes.ca



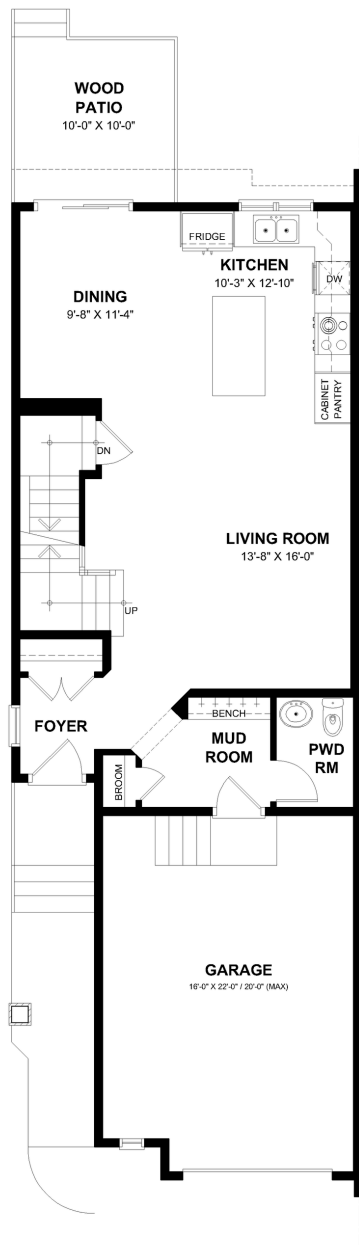
3 Bedroom



2.5 Baths

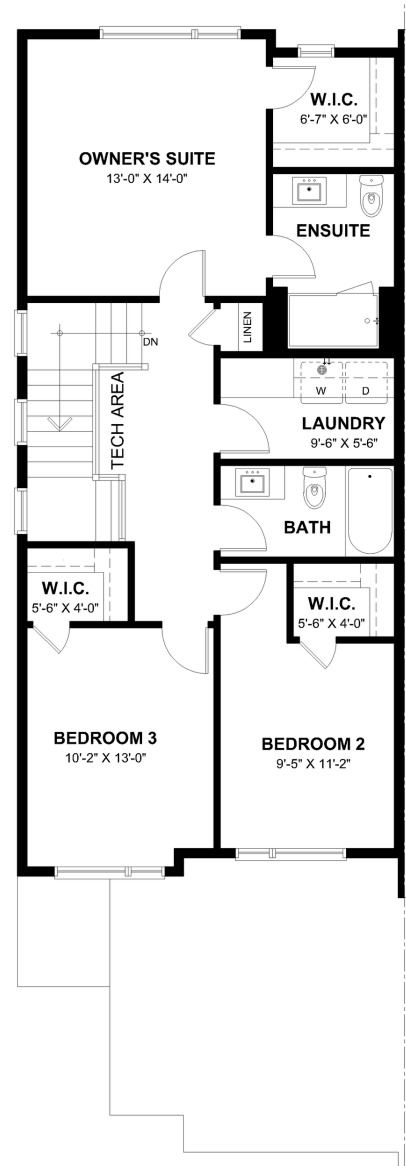
Main Level

768 sq.ft



Upper Level

948 sq.ft



*Gold line indicates shared wall

Features:

- Single garage with extra storage
- Mud room with deacons bench
- Open concept
- Upper floor walk-in closets
- Upper floor tech area

SHOWHOME

NEWCASTLE

Keep up to date with us on



WestCreek Homes building in:

